

124°14'E

124°16'E

124°18'E

124°20'E

124°22'E

124°24'E

LEGEND

- Municipal Boundary
- Barangay Boundary
- Rivers and Creeks
- National Road
- Provincial Road
- Municipal Road
- Barangay Road

Annual Growth Rate 1995-2000

- Increased by up to 2%
- Increased by 2% to 5%
- Increased by over 5%



Republic of the Philippines
PROVINCE OF BOHOL
City of Tagbilaran



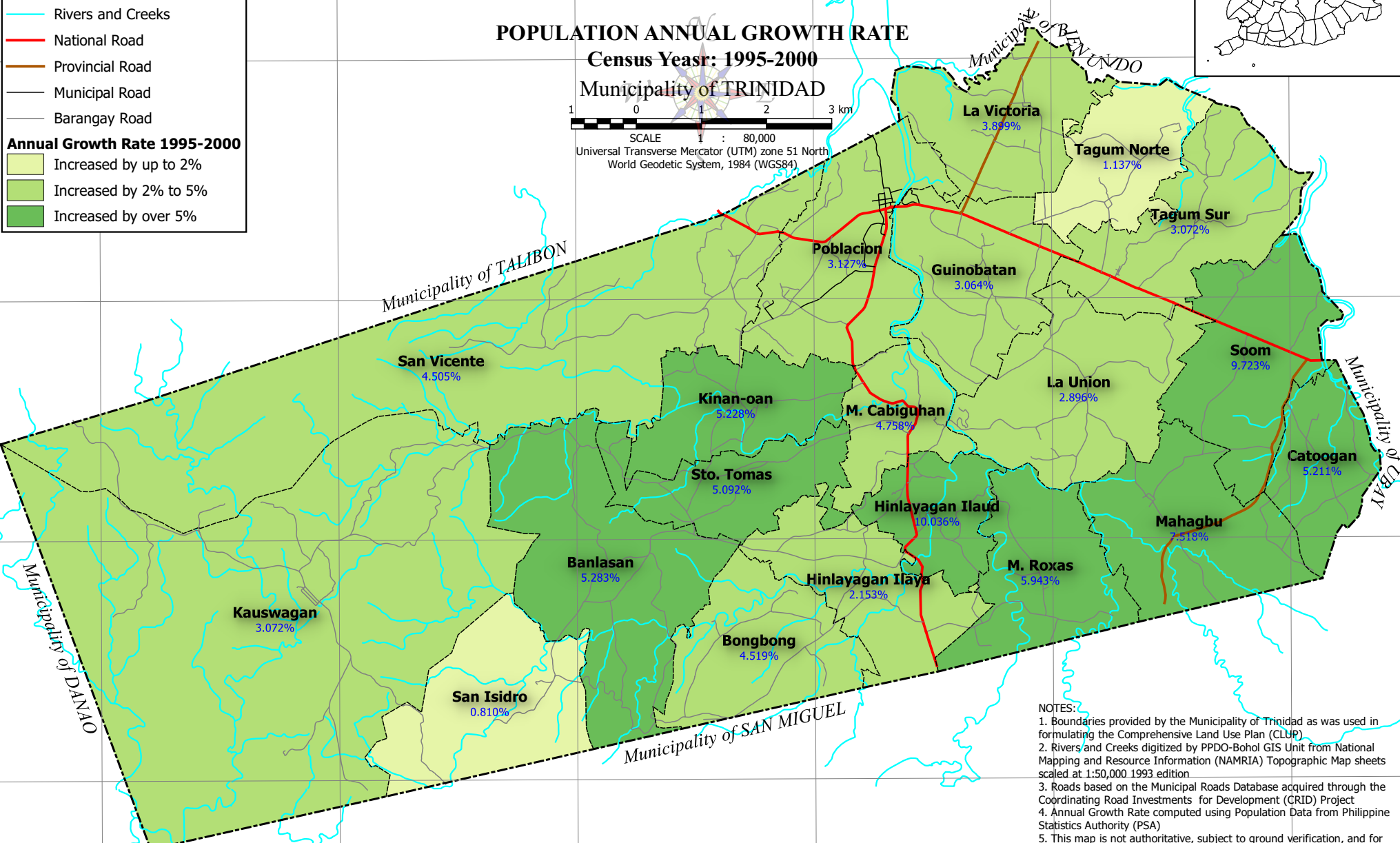
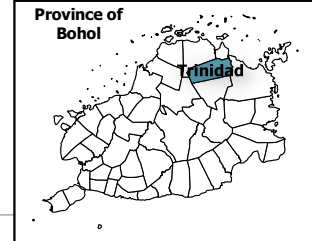
PROVINCIAL PLANNING AND DEVELOPMENT OFFICE

POPULATION ANNUAL GROWTH RATE

Census Year: 1995-2000
Municipality of TRINIDAD



SCALE 1 : 80,000
Universal Transverse Mercator (UTM) zone 51 North
World Geodetic System, 1984 (WGS84)



NOTES:

1. Boundaries provided by the Municipality of Trinidad as was used in formulating the Comprehensive Land Use Plan (CLUP)
2. Rivers and Creeks digitized by PPDO-Bohol GIS Unit from National Mapping and Resource Information (NAMRIA) Topographic Map sheets scaled at 1:50,000 1993 edition
3. Roads based on the Municipal Roads Database acquired through the Coordinating Road Investments for Development (CRID) Project
4. Annual Growth Rate computed using Population Data from Philippine Statistics Authority (PSA)
5. This map is not authoritative, subject to ground verification, and for indicative use only

124°14'E

124°16'E

124°18'E

124°20'E

124°22'E

124°24'E

10°06'N

10°04'N

10°02'N

10°00'N

10°06'N

10°04'N

10°02'N

10°00'N